

Configuring Windows NT Operating System

Before you begin, please make sure that:

- Windows NT 4.0 is installed and fully configured for your system.
- Your modem has been installed using the Add New Hardware wizard.
- Your modem is on, and connected to a phone line.

You will also need the following account details, supplied to you by FunnelWeb Internet:

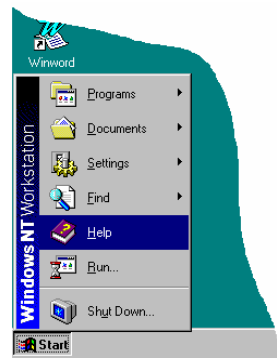
- Your UserName
- Your Password

Please note:

FunnelWeb Internet's Support Team does not offer support for general Windows NT problems, modem hardware problems or TCP/IP software other than your browser and email software. We can only assist you with connectivity of Windows NT to our system. If you have a problem with configuring your computer or modem, you should contact the vendor directly.

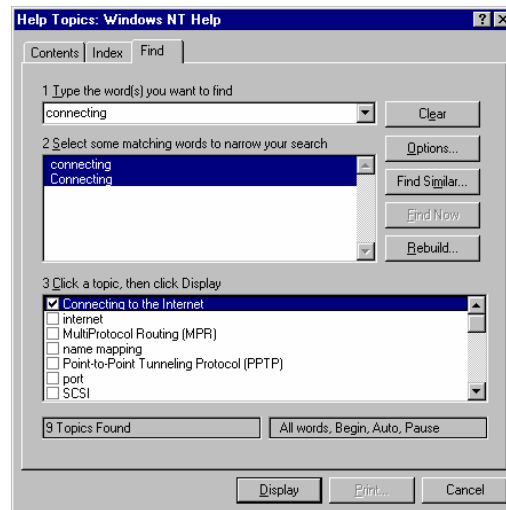
Let's start....

1. Click on the Start button, and select the "Help" option.

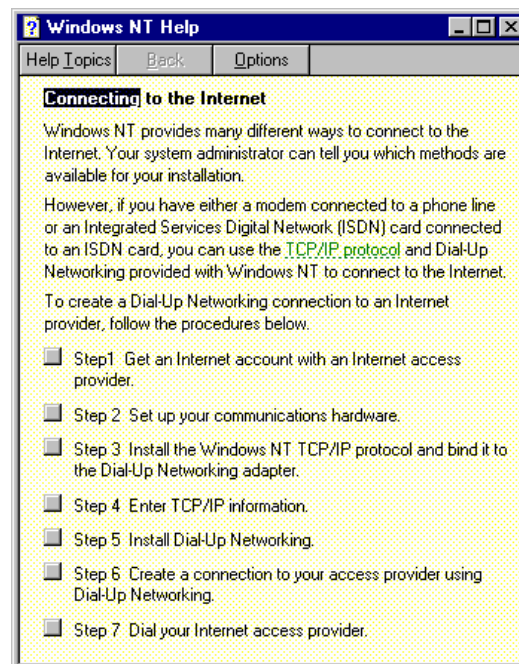


2. Select the "Find" tab. Type "connecting" in the first field.

Select the "Connecting to the Internet" topic in the third field by clicking on the check box beside it. Click the "Display" button.



3. Follow the steps listed. More detailed information for each step can be obtained by clicking on the gray buttons beside each step.



If you have any difficulties, please contact FunnelWeb Internet on 1300 360 024 or email support@fwi.net.au.